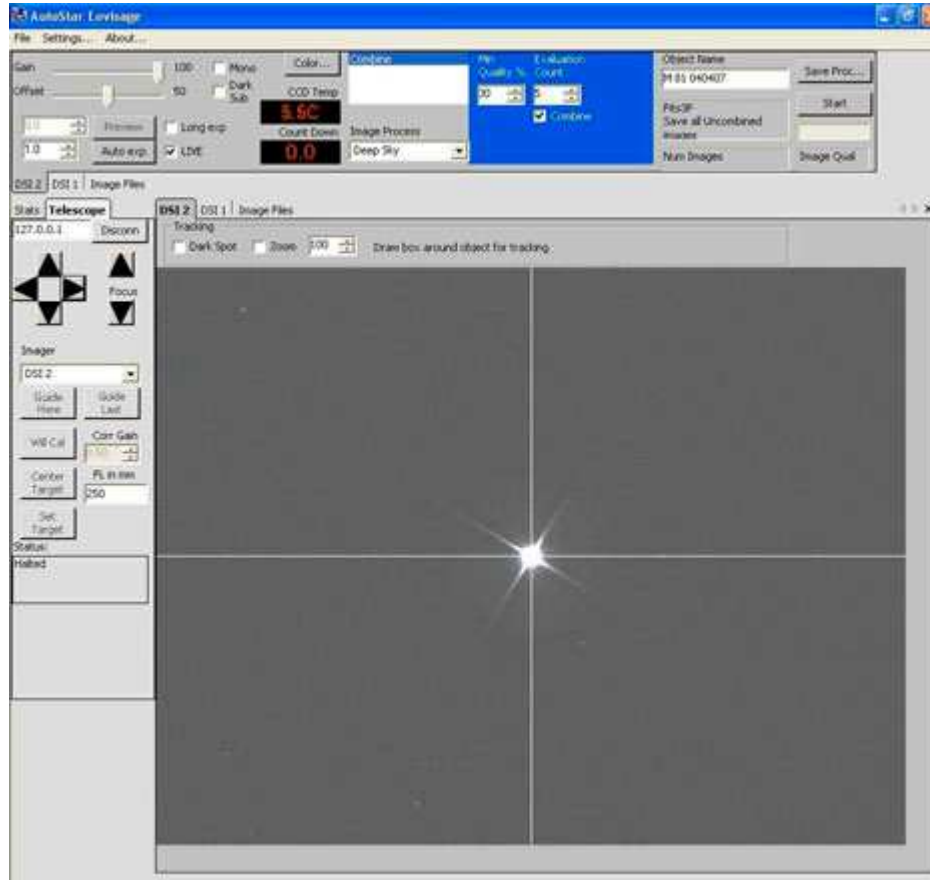


## Crosshair/Reticle Lines for DSI II Color and DSI II Pro Cameras



**Figure 1 - DSI II Cross In the First “Live” Imaging Window.**

**DSI II Cross** is a small executable program that draws Crosshair/reticle lines on the “Live” imaging window in Meade’s Envisage program. This new version of the former **DSI Cross** program correctly sizes the crosshair/reticle lines on the “Live” imaging window for use with the DSI II Color and DSI II Pro cameras. The resulting crosshair/reticle lines allow convenient and accurate object centering and placement of imaging objects on the screen than is otherwise possible.

When the Envisage imaging program is running, DSI II Cross finds the first “Live” imaging window and draws the crosshair/reticle lines in this Live image window.

**HINT: How to Determine which DSI camera will be displayed in the Live image window where the crosshair/reticle lines are drawn when using more than one DSI at the same time:**

If you use multiple DSI cameras when imaging, such as for guiding, you will most likely want the DSI camera that is capturing the object (not the guiding camera) to display in the first Live image window where the crosshair/reticle lines are drawn. It is easy to determine which camera will be displayed in the first “Live” imaging window.

1. Connect 2 or more DSI cameras to the computer.
2. Start the Envisage imaging program.
3. Run DSI II Cross (dsi2cross.exe).
4. Click on tab of the first “Live” image window on the left (as shown in figure 1). The camera’s name is displayed on the “Live” window’s tab.

5. Finally, note which usb cable the camera is connected to.

**Any camera plugged into this cable will be displayed in this first “Live” imaging window!**

(...providing you do not unplug and mix up the cable positions in the usb connectors).

DSI II Cross is available for download at <http://www.wataugaskies.org/dsi2cross>

---

Thanks to Jack Bayt, the author of the original DSI Cross program for granting permission to modify and distribute this new version of the program for DSI II Color and DSI II Pro users. Also thanks to Chuck Reese and Ray Pickett for beta-testing the new version. Screenshot image courtesy of Ray Pickett.

I hope you find this new version helpful as you image the heavens above – Tom King.  
Comments, questions or problems can be sent to: tking2097 at yahoo dot com.

## FAQ

---

### **The Horizontal Line is too low**

Hey Tom, I just downloaded the new DSI II Cross, and my cross hairs are not centered. The horizontal line is too low. I am using a DSI Pro II. Is there a certain resolution you have to run on the monitor? By the way, I get nothing in the little box were I can tell it 1 line or dual lines. Thanks - Gary McCormick

This happens when the resolution for the monitor is set too low to show the entire “Live” imaging window. You have a couple of options:

Option #1 (Best) - Increase the monitor's resolution to show the entire "Live" imaging window. 1024 x 768 will not show the entire "Live" window, 1280 x 1024 does. This is best *if* the monitor will support a higher resolution. You know... the satellite trails, the airplanes, the Martians !?!.....

Option #2. Don't worry about it - the lines *\*are\** centered, but the monitor's resolution is too low to show the bottom part of the "Live" imaging window. You can still use the crosshairs to center the object for the final picture. This is ok if the monitor won't support a higher resolution or is not readable/useable at higher resolutions.

**The good news is, the center of the crosshairs/reticle really is the center of the final image, regardless of whether you can see the entire "Live" imaging window on the monitor or not!**